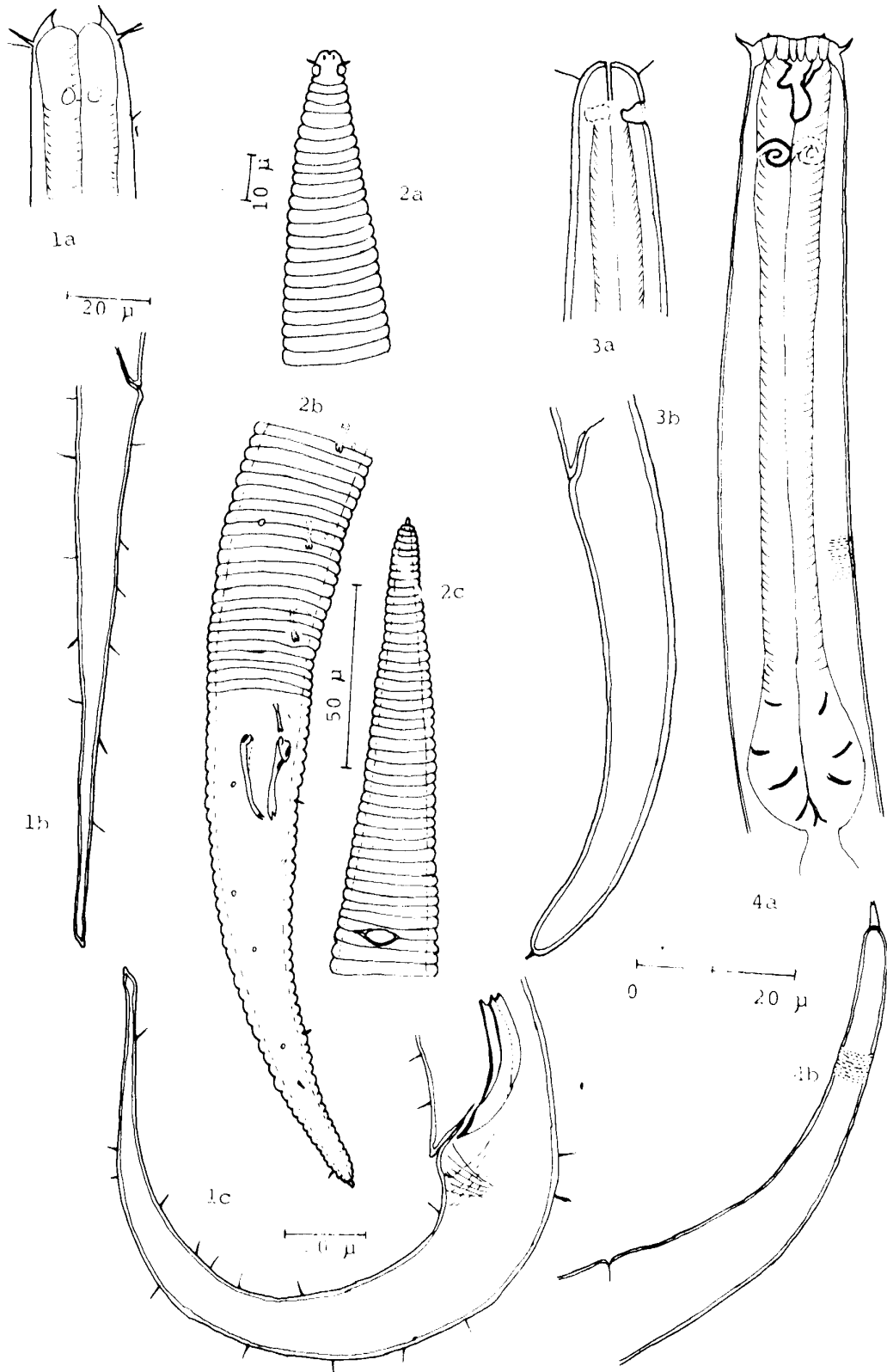
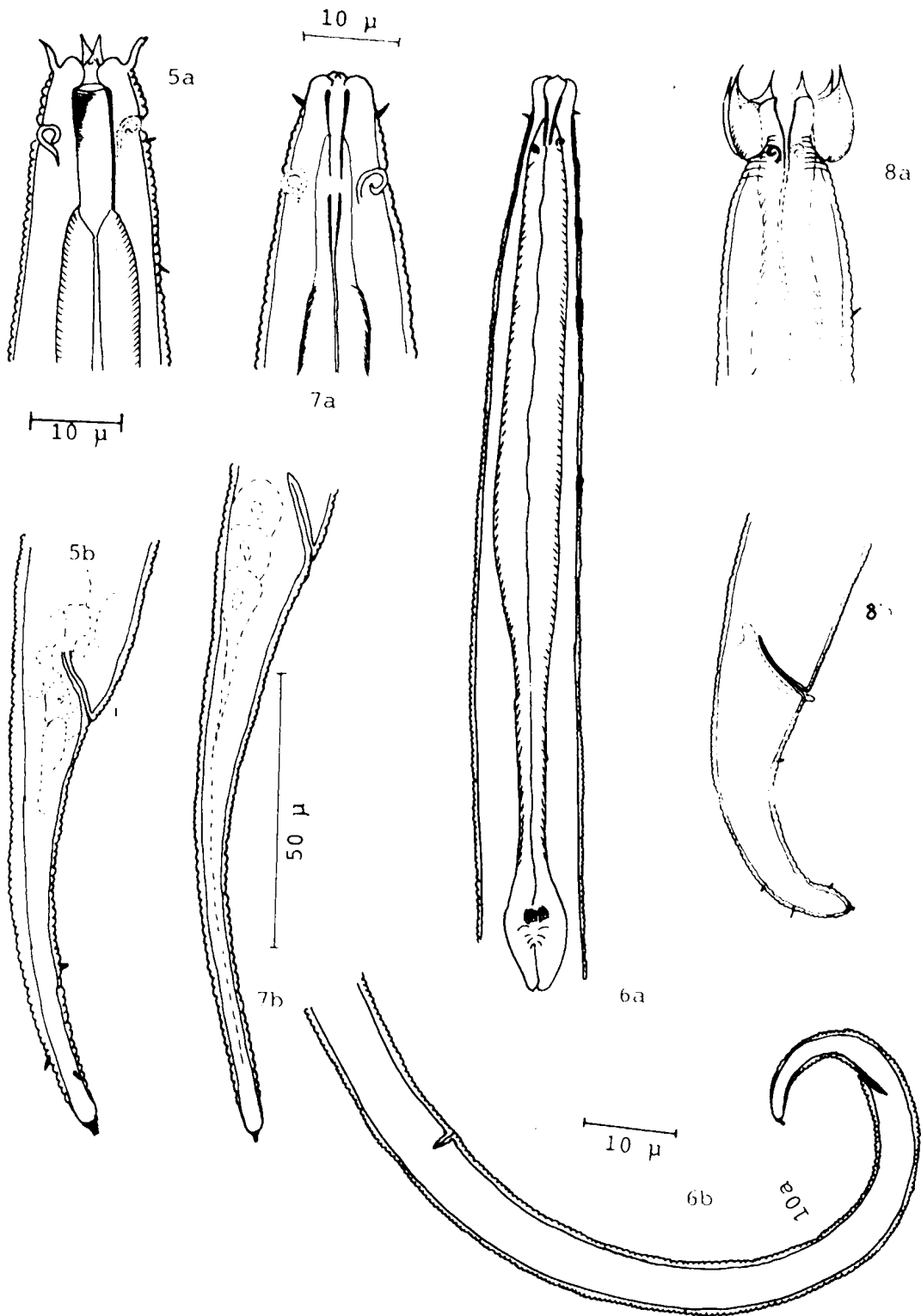


- LAMINA I: Fig. 1 (a-c) *Monhystera dispar*  
 Fig. 2 (a-c) *Aphanolaimus* sp.  
 Fig. 3 (a-b) *Cylindrolaimus* sp.  
 Fig. 4 (a-b) *Achromadora ruricola*
- LAMINA II: Fig. 5 (a-b) *Plectus armatus*  
 Fig. 6 (a-b) *Plectus parvus*  
 Fig. 7 (a-b) *Plectus rizhophilus*  
 Fig. 8 (a-b) *Wilsonema otophorum*
- LAMINA III: Fig. 9 (a-c) *Chiloplacus propinquus*  
 Fig. 10 (a-c) *Eucephalobus paracornutus*  
 Fig. 11 (a-c) *Cervidellus* sp.  
 Fig. 12 (a-c) *Cervidellus vexilliger*
- LAMINA IV: Fig. 13 (a-b) *Aphelenchus avenae*  
 Fig. 14 (a-b) *Aphelenchoides* sp.  
 Fig. 15 (a-c) *Paraphelenchus pseudoparietinus*  
 Fig. 16 (a-c) *Aglenchus costatus*
- LAMINA V: Fig. 17 (a-d) *Merlinius* sp.  
 Fig. 18 (a-d) *Pratylenchus helophilus*  
 Fig. 19 (a-e) *Criconemoides* sp.
- LAMINA VI: Fig. 20 (a-b) *Triyla* sp.  
 Fig. 21 (a-e) *Prismatolaimus* sp.  
 Fig. 22 (a-d) *Miconchus studeri*
- LAMINA VII: Fig. 23 (a-d) *Anatonchus tridentatus*  
 Fig. 24 (a-c) *Dorylaimus tenellus*
- LAMINA VIII: Fig. 25 (a-b) *Dorylaimus ettersbergensis*  
 Fig. 26 (a-c) *Dorylaimus* sp.  
 Fig. 27 (a-b) *Dorylaimus discolaimoideus*  
 Fig. 28 (a-c) *Dorylaimus brevis*
- LAMINA IX: Fig. 29 (a-b) *Aporcelaimus vorax*  
 Fig. 30 (a-b) *Dorylaimus nitidus*  
 Fig. 31 (a-c) *Dorylaimus acuticauda*
- LAMINA X: Fig. 32 (a-f) *Pungentus* sp.
- LAMINA XI: Fig. 33 (a-b) *Longidorus elongatus*  
 Fig. 34 (a-b) *Longidorella macramphis*  
 Fig. 35 (a-c) *Xiphinema* sp.
- LAMINA XII: Fig. 36 (a-e) *Dorylaimellus* sp.  
 Fig. 37 (a-e) *Dorylaimellus virginianus*
- LAMINA XIII: Fig. 38 (a-d) *Oxydirus oxycephalus*  
 Fig. 39 (a-c) *Tylencholaimus teres*

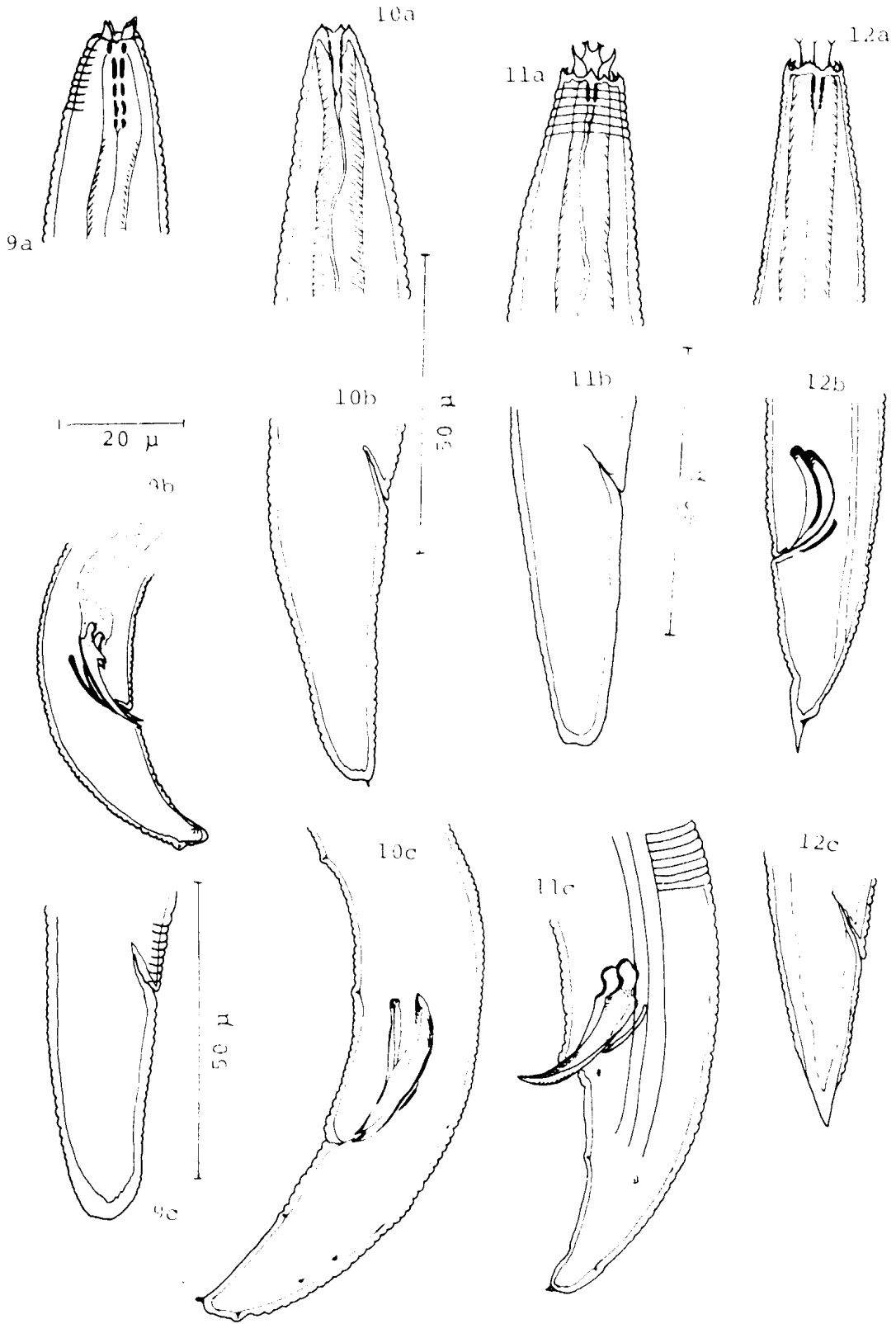
LAMINA I



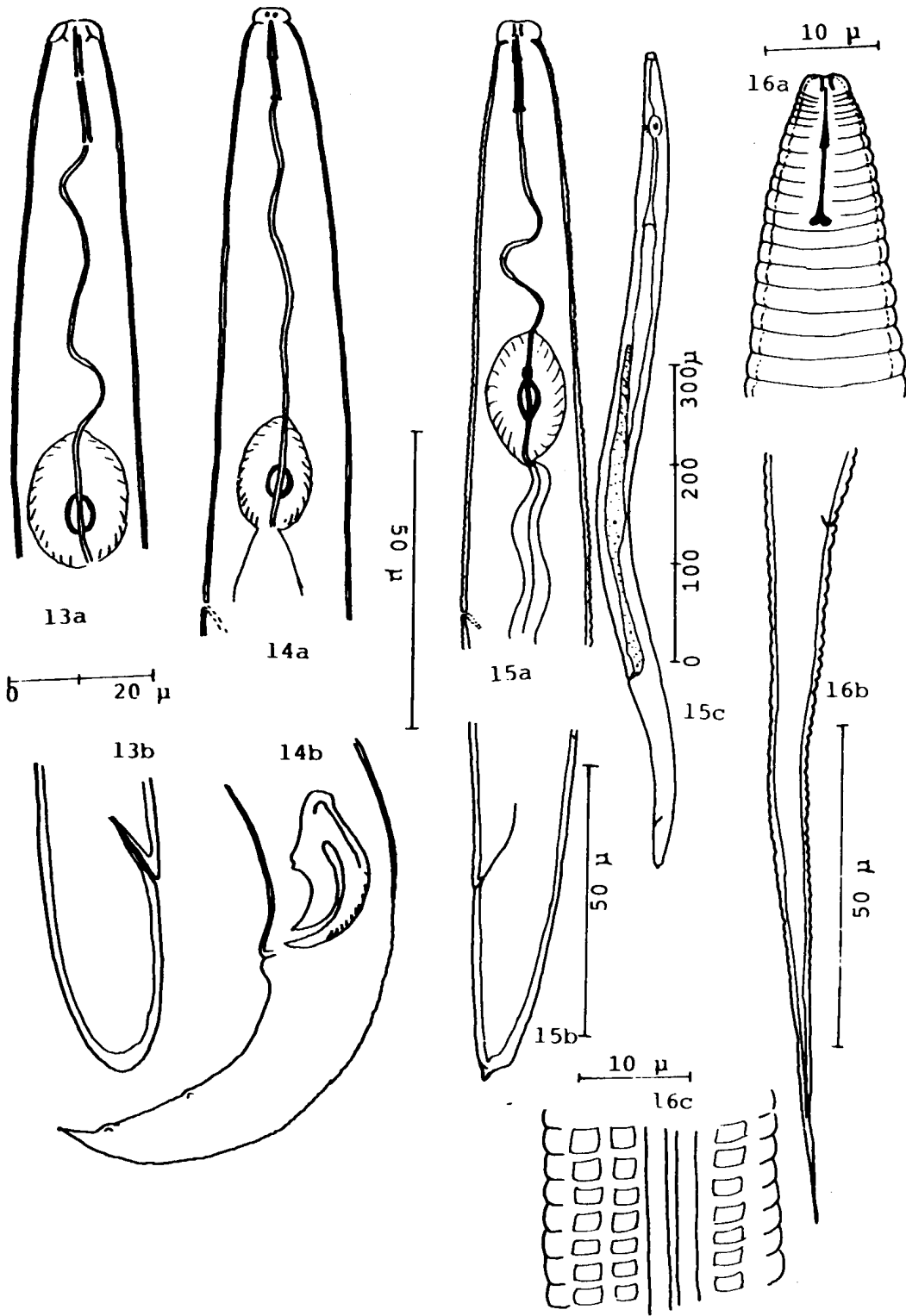
LAMINA II



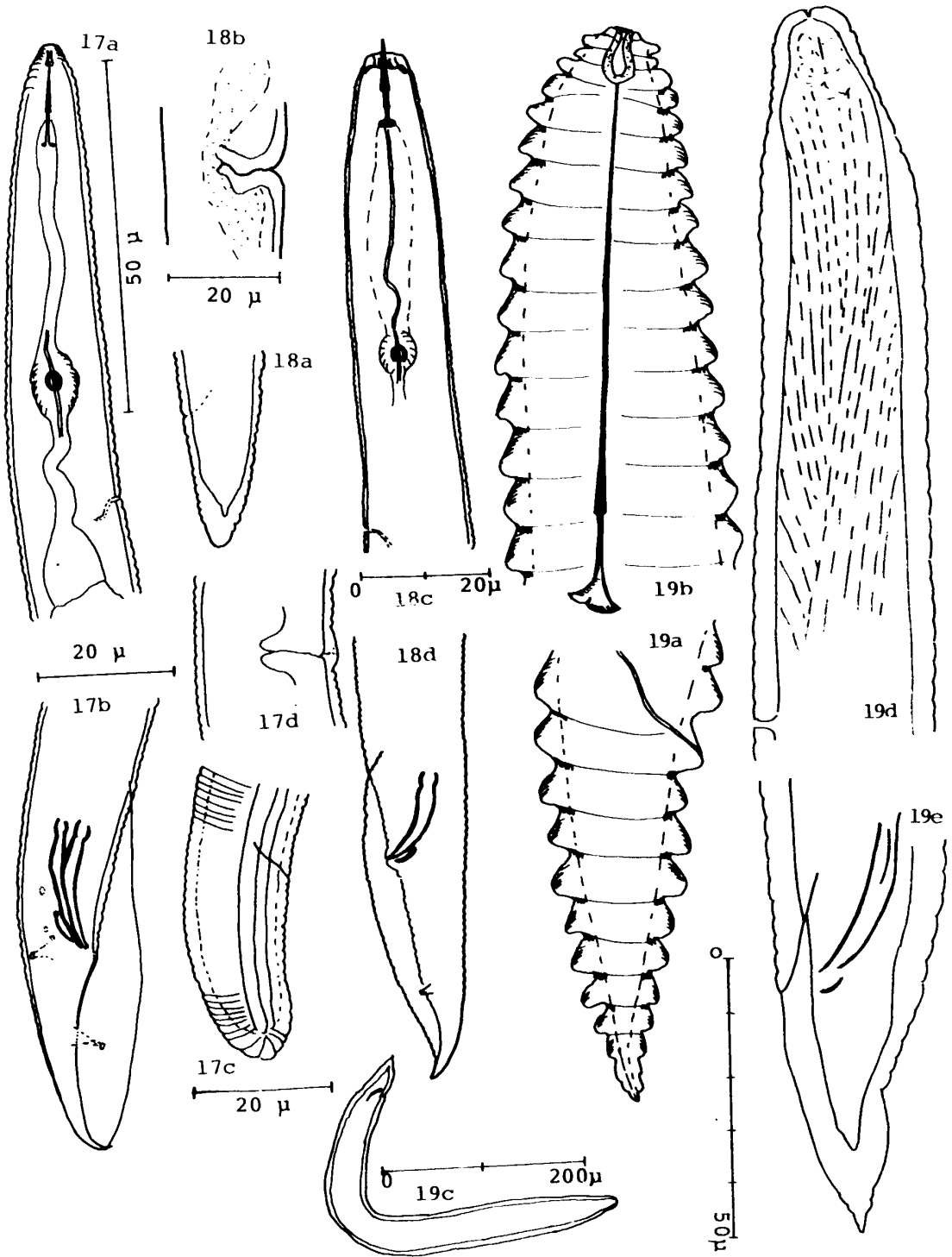
LAMINA III



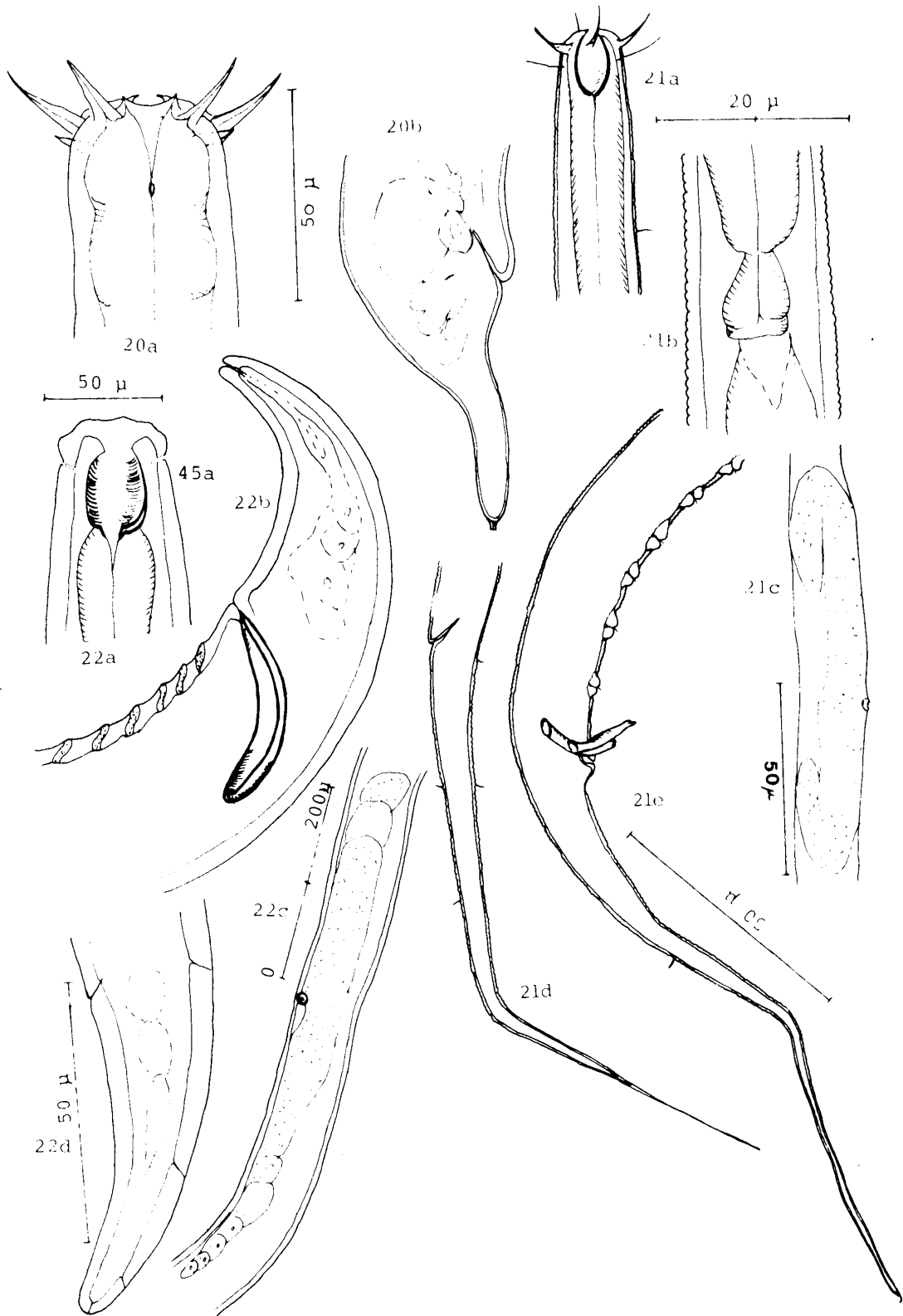
LAMINA IV



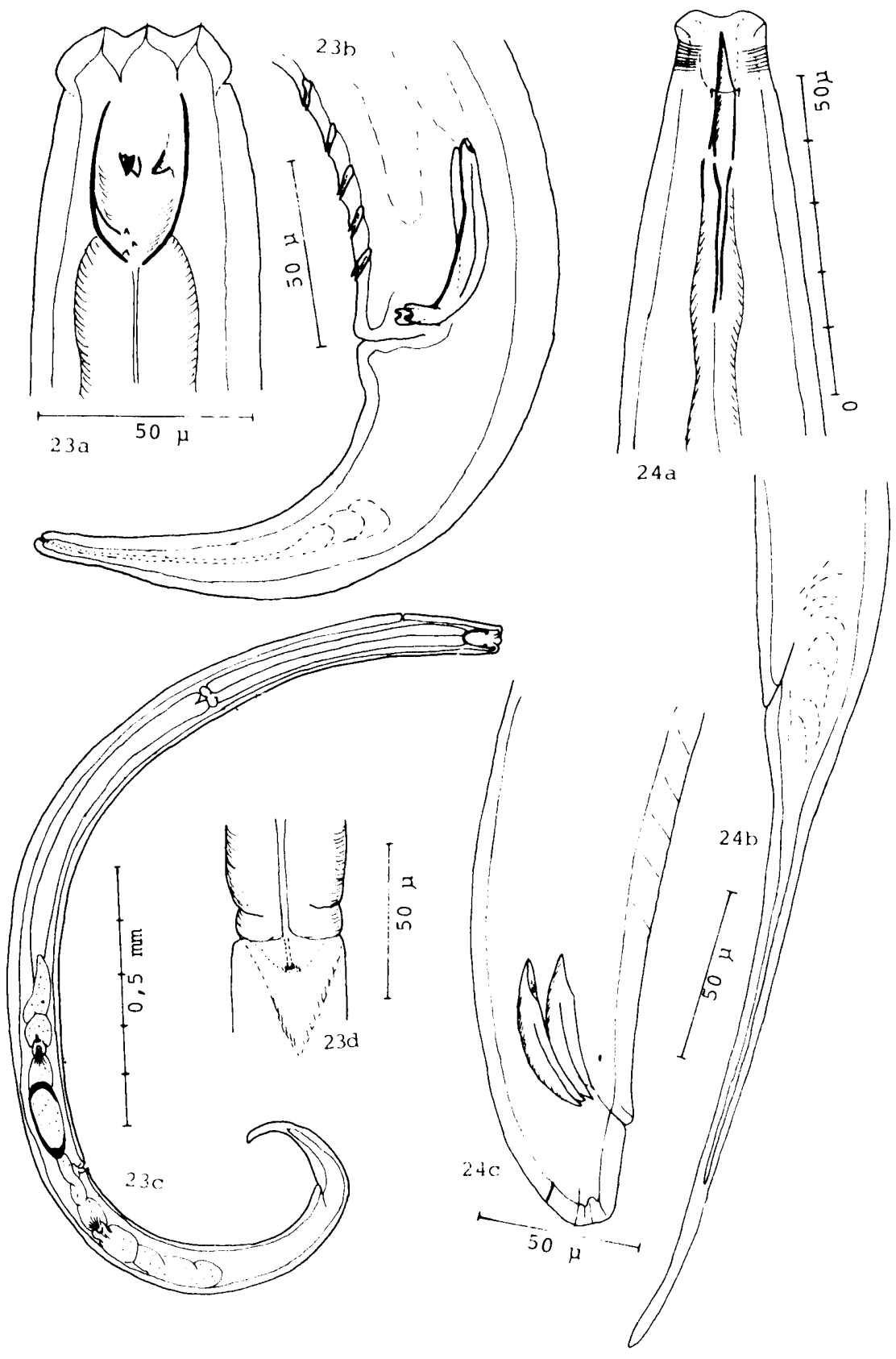
LAMINA V



LAMINA VI

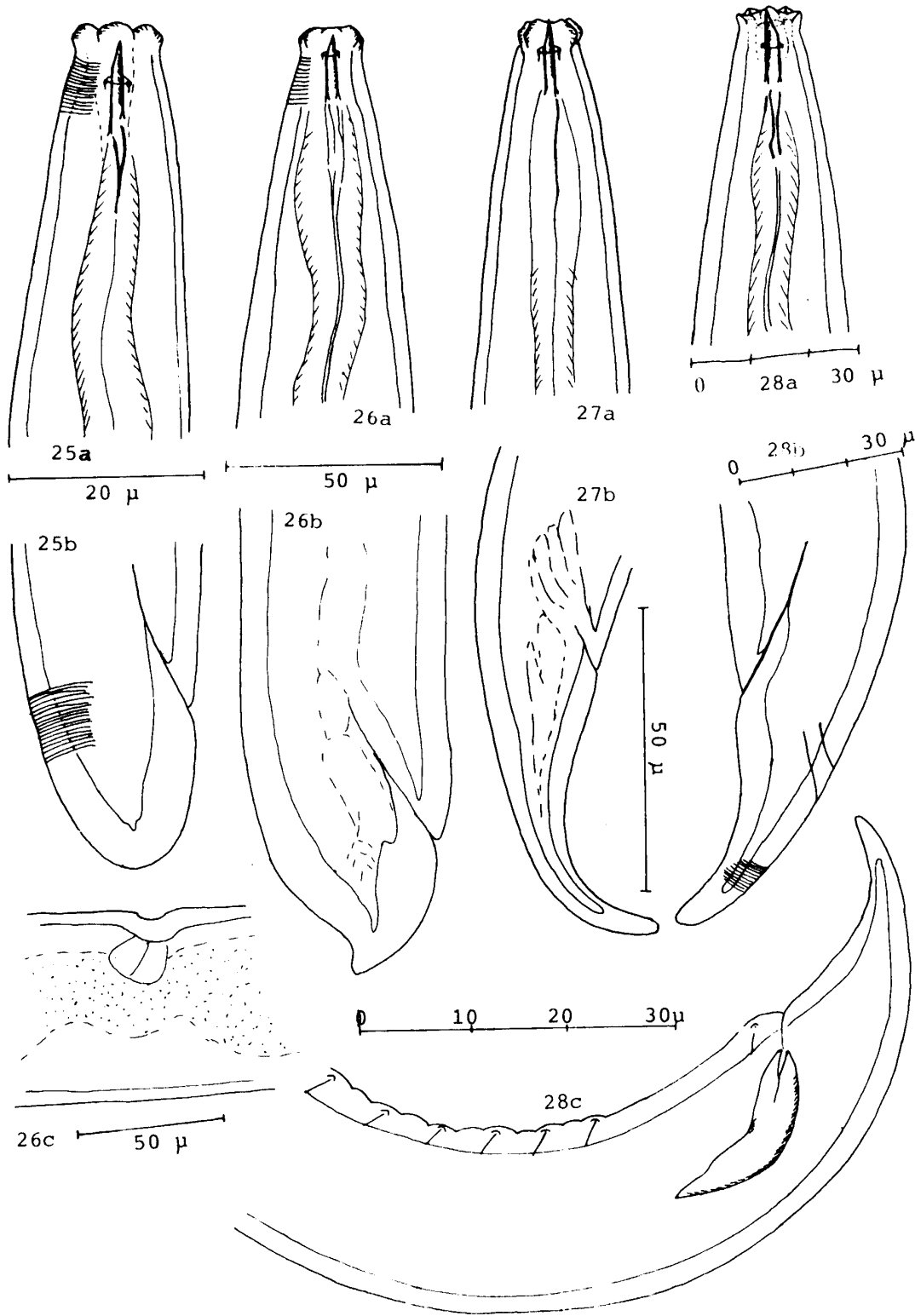


LAMINA VII

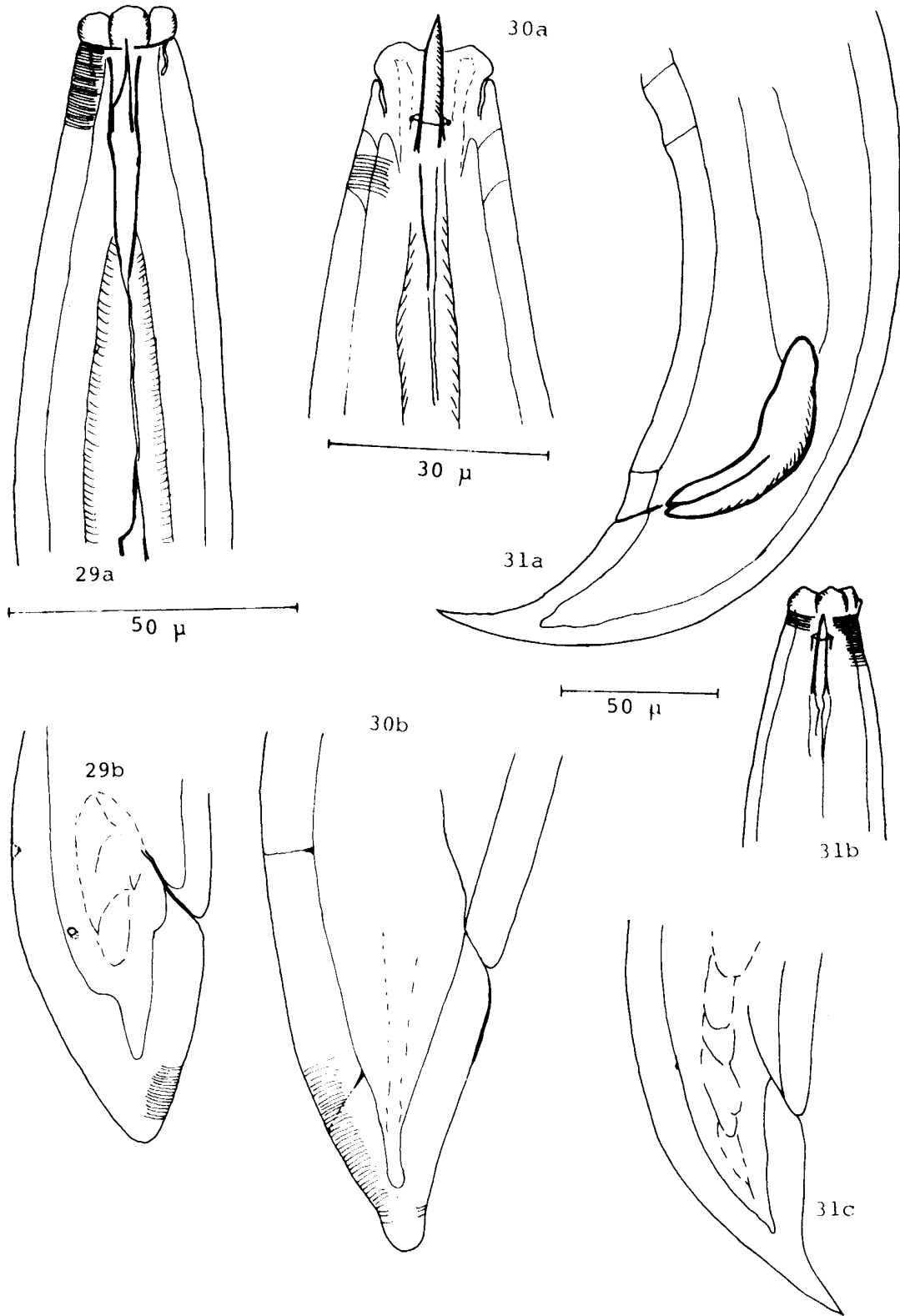




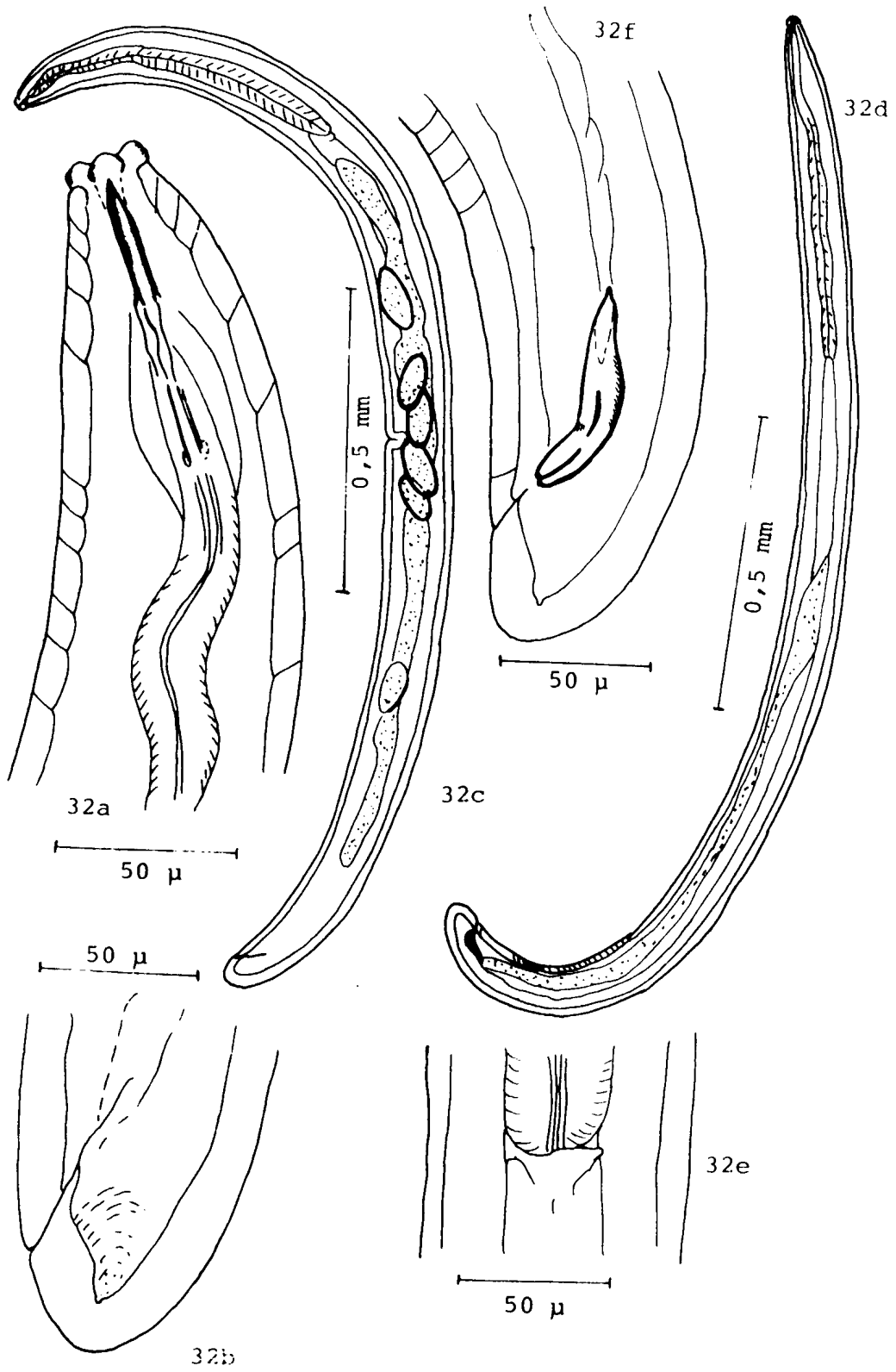
LAMINA VIII



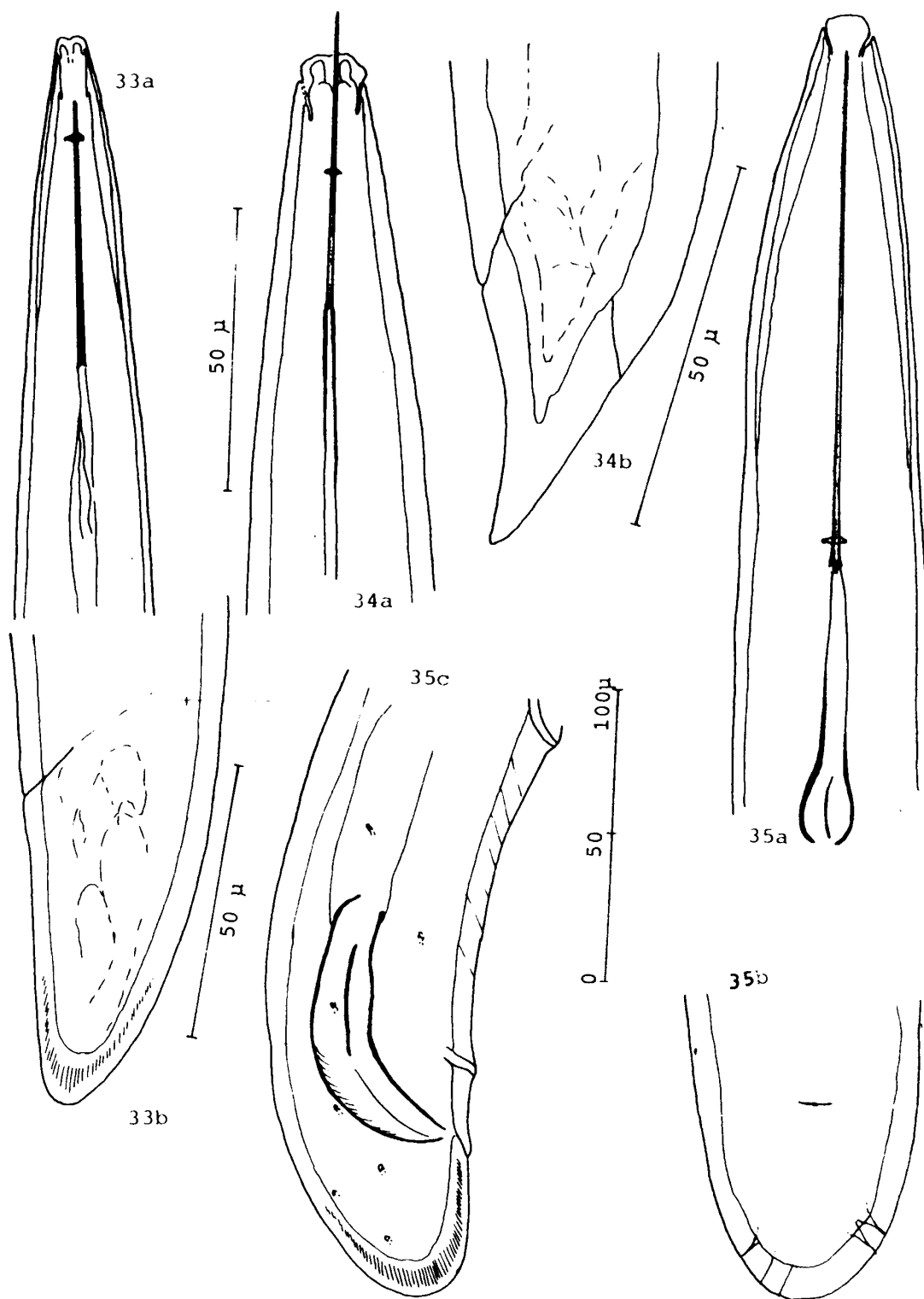
LAMINA IX



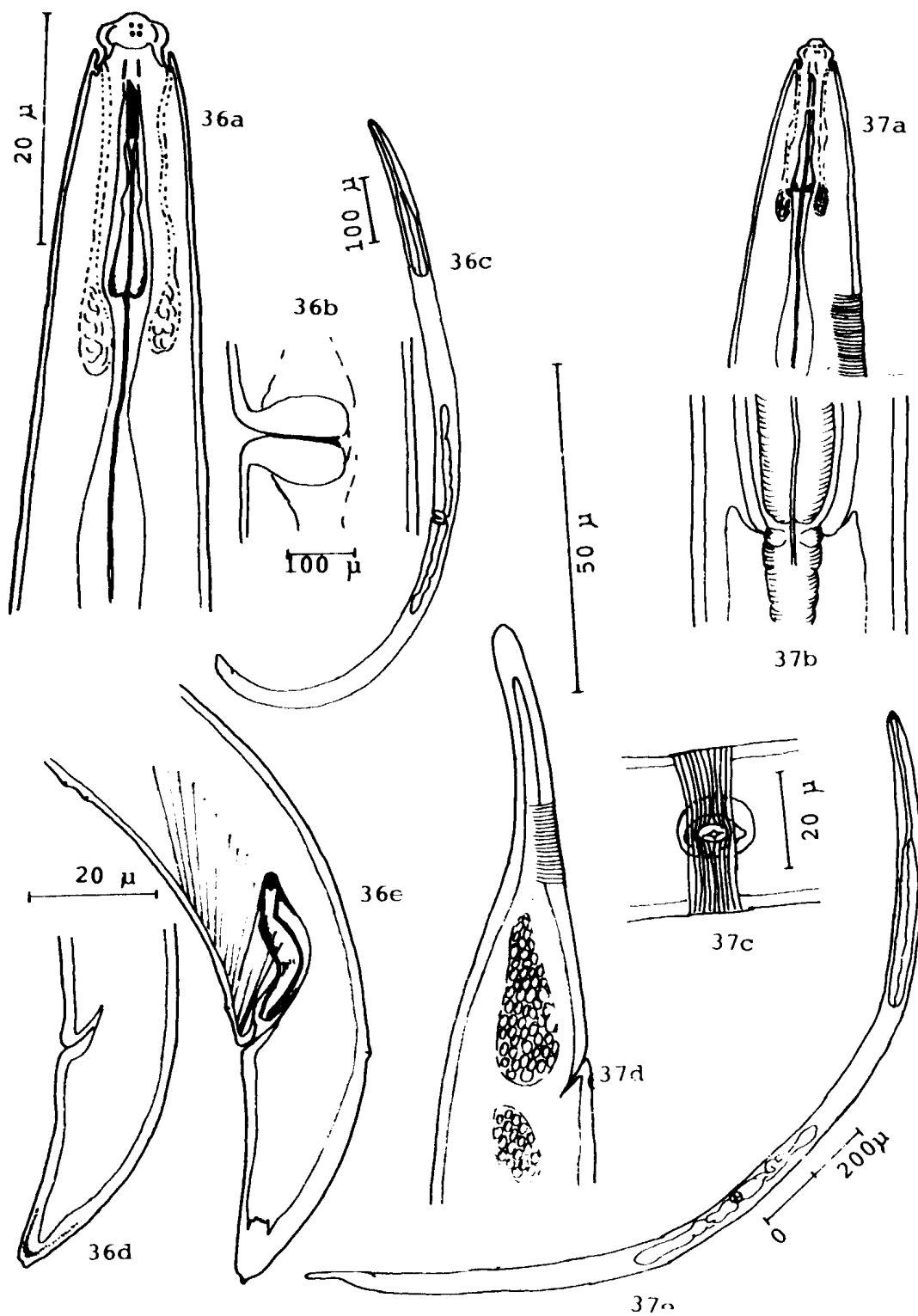
LAMINA X



LAMINA XI



LAMINA XII



LAMINA XIII

